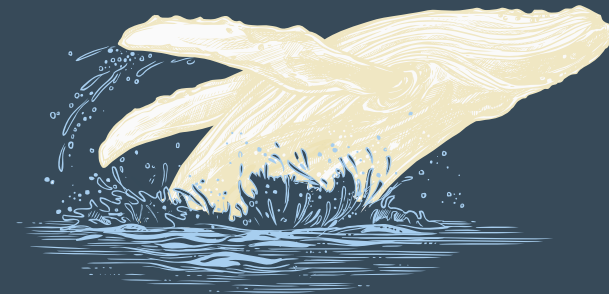


OUR WORLD IS YOURS.

# THE ALBINO WHALE



## EXTRA PALE ALE MALT



### PRODUCT SPEC:

IOB COARSE EXTRACT 0.7MM DRY	310 MIN
COLOR (ASBC)	1.0 - 1.8
MOISTURE	3.0 - 4.5%
TOTAL PROTEIN DRY BASIS	8.5 - 10.2%
TOTAL NITROGEN, DRY	1.65% MAX
EBC FAN IN WORT	150MG/L MIN
EBC WORT PH	6.0 MAX
ALPHA AMYLASE DRY BASIS	35DU MIN
EBC B-GLUCAN IN WORT	140MG/L MAX
FRIABILITY	86% MIN
HOMOGENEITY	98% MIN

### PALE, BISCUIT, SWEET AND NUTTY MALT...

Pauls extra pale ale malt is 100% British malting barley specifically tailored by our maltsters for the needs of the craft brewer. Pale as we can get it, perfect for those bright blonde beer styles. Smaller designated craft malt batches are malted in our Boby Malt house in Bury St Edmunds, UK to achieve a brilliant base malt for numerous recipe styles.

### TYPICAL BEER STYLES

- ALES
- IPA
- PALE ALE
- EXTRA PALE ALE
- DIP
- NEIPA
- STOUT
- PORTER

### TYPICAL USAGE RATES

Up to 100%.

Contact us for more information or to place an order.

(800) 669-6258

[sales@prairiemalt.com](mailto:sales@prairiemalt.com)

